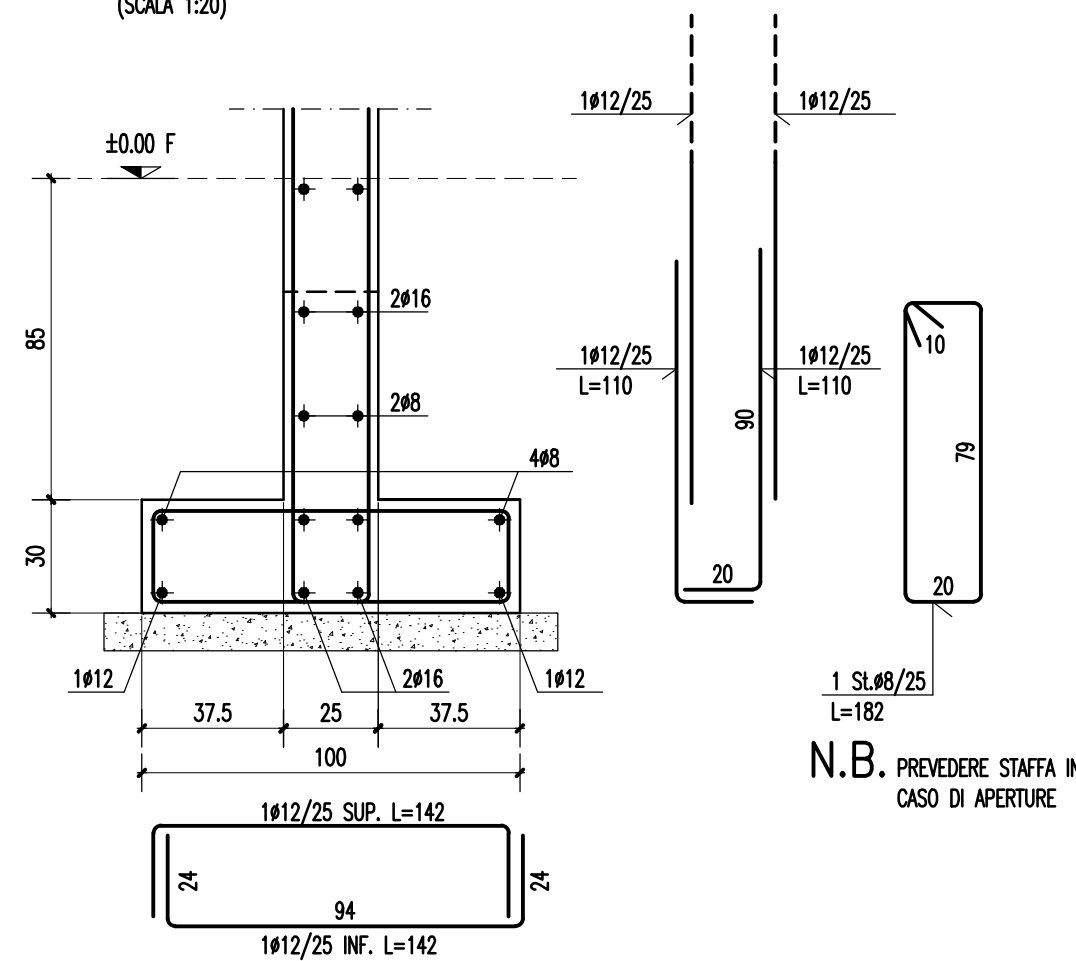
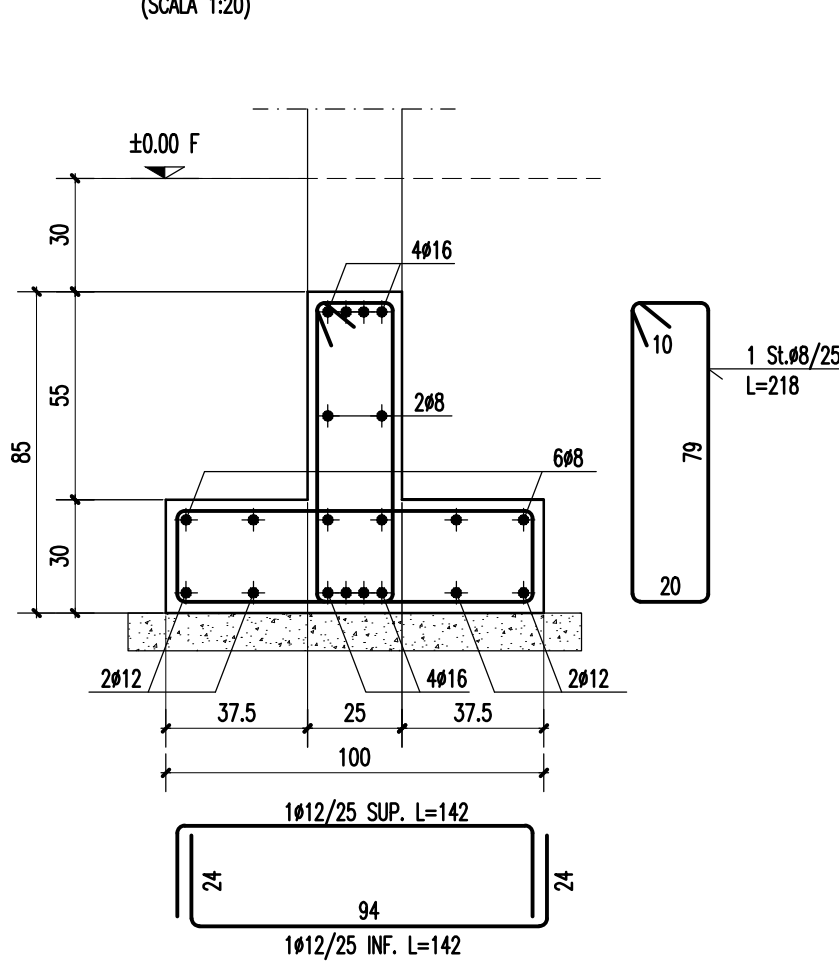


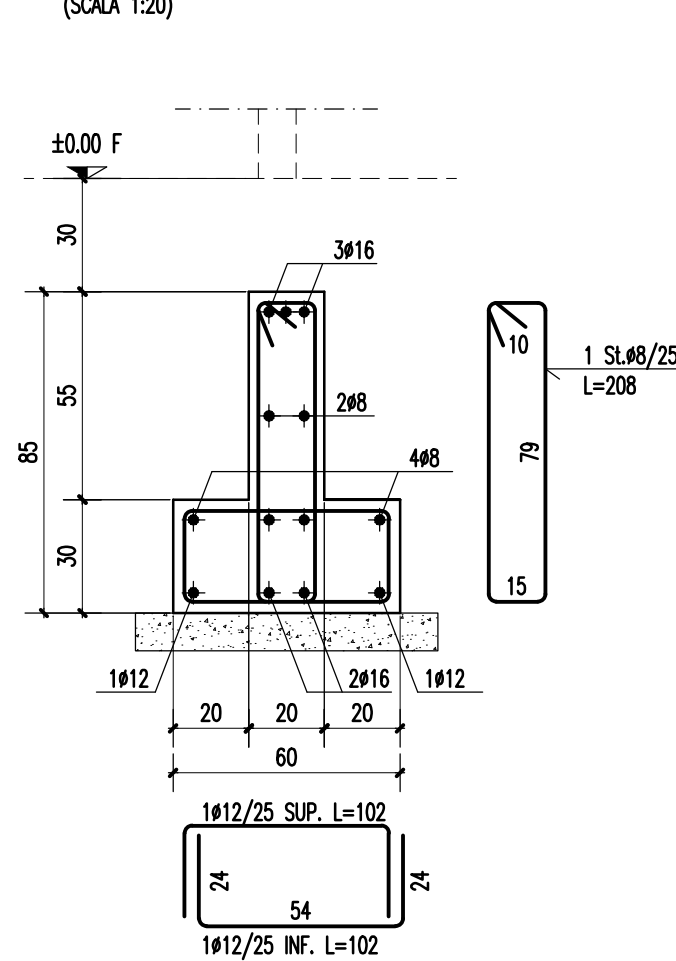
FONDAZIONE F1
(SCALA 1:20)



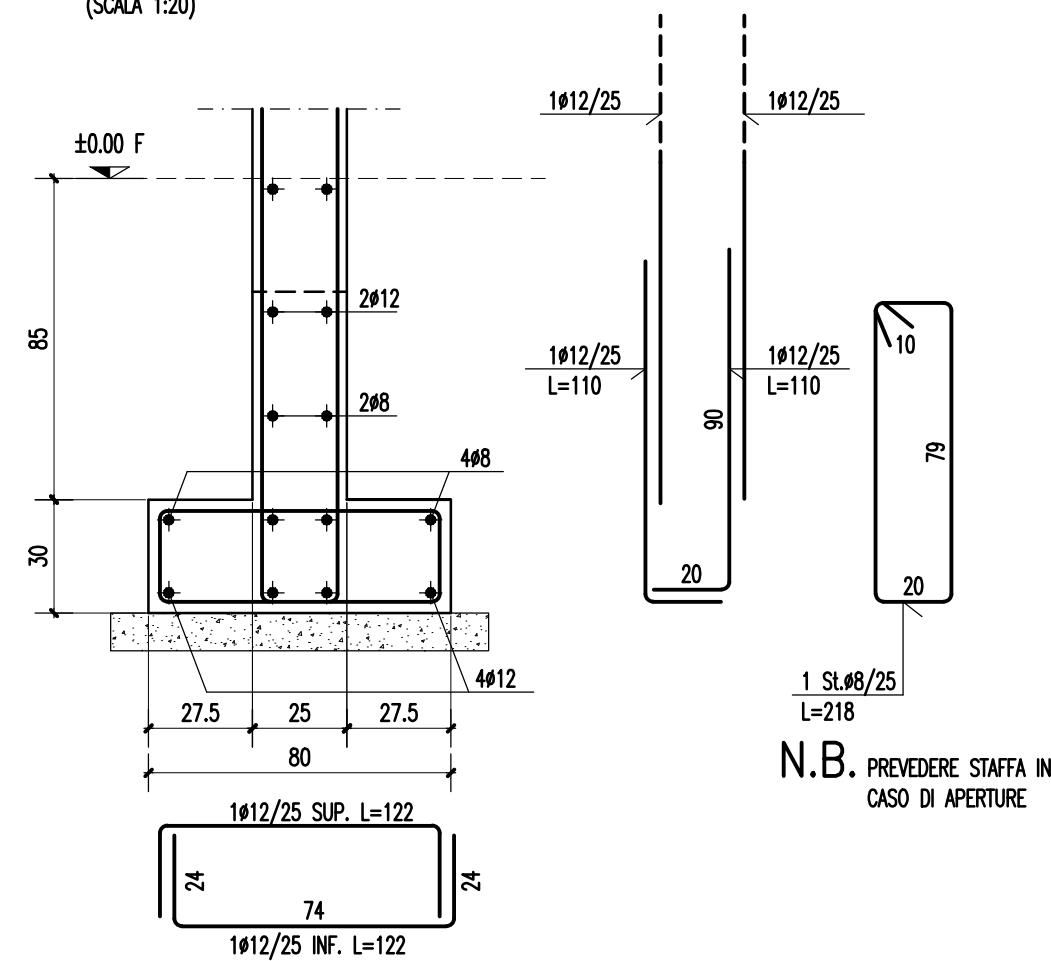
FONDAZIONE F2
(SCALA 1:20)



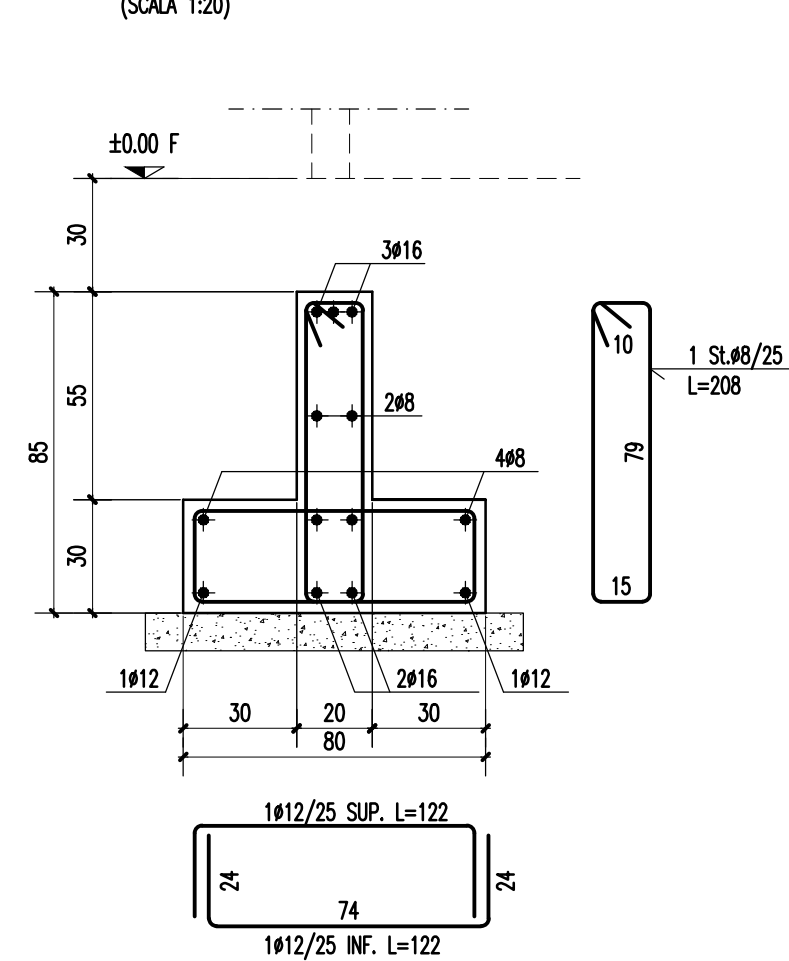
FONDAZIONE F3
(SCALA 1:20)



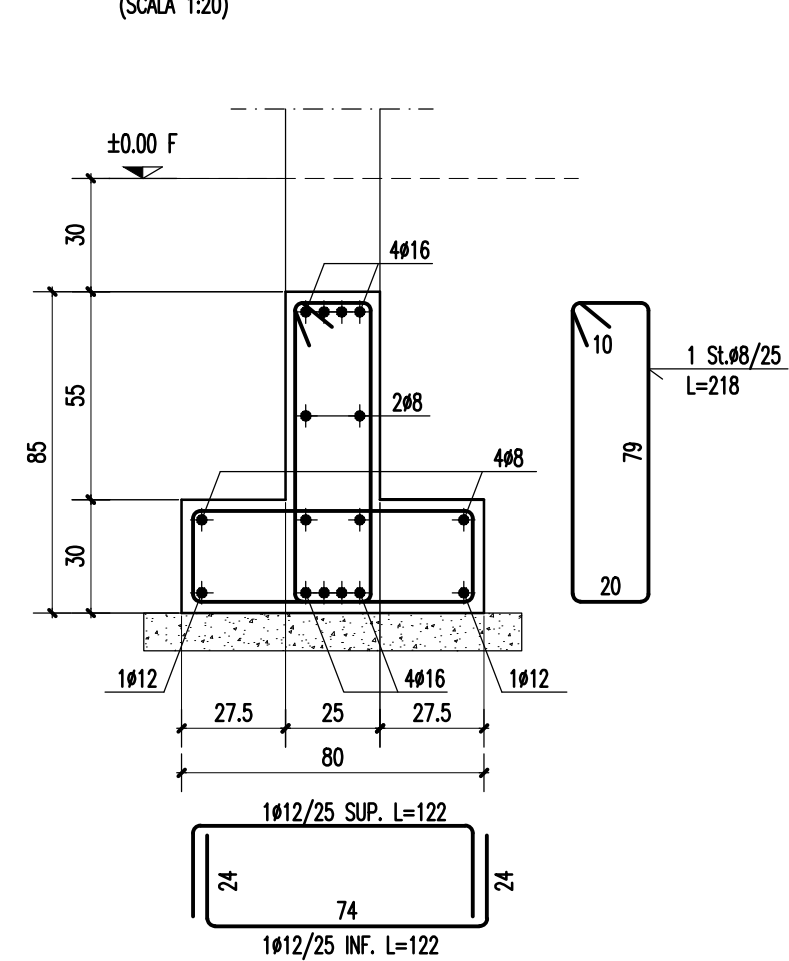
FONDAZIONE F4
(SCALA 1:20)



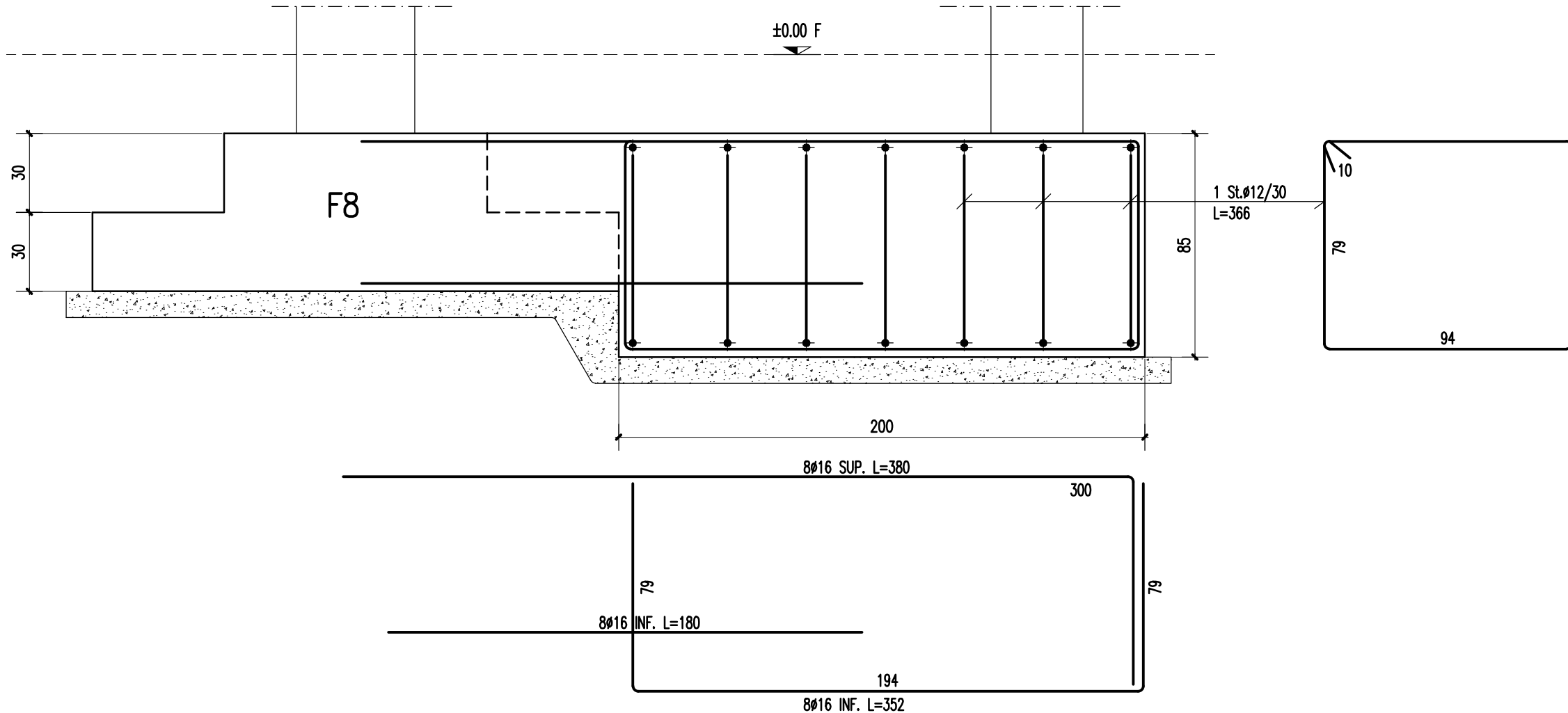
FONDAZIONE F5
(SCALA 1:20)



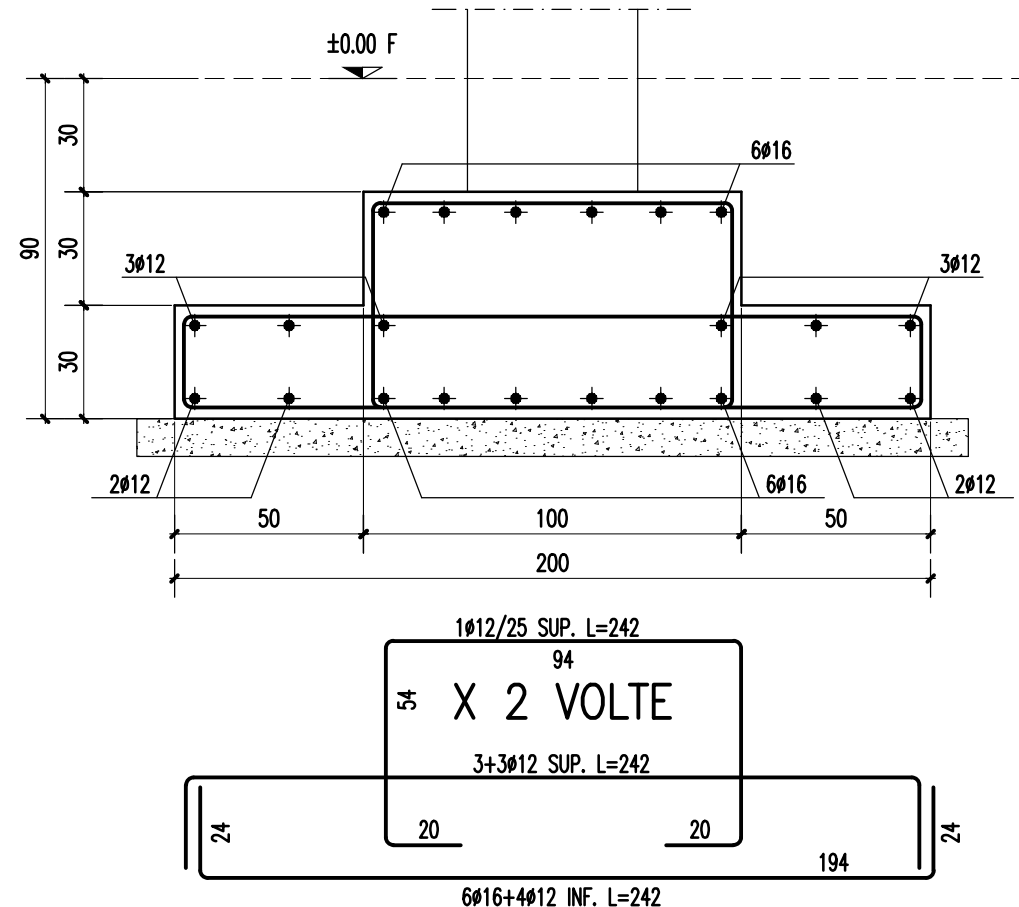
FONDAZIONE F6
(SCALA 1:20)



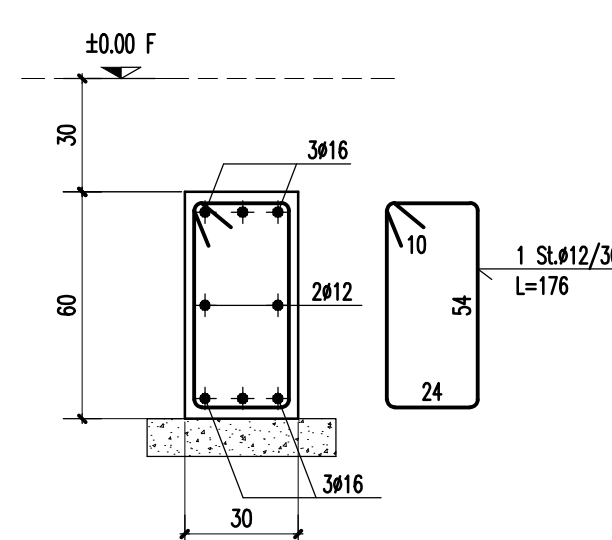
FONDAZIONE F7
(SCALA 1:20)



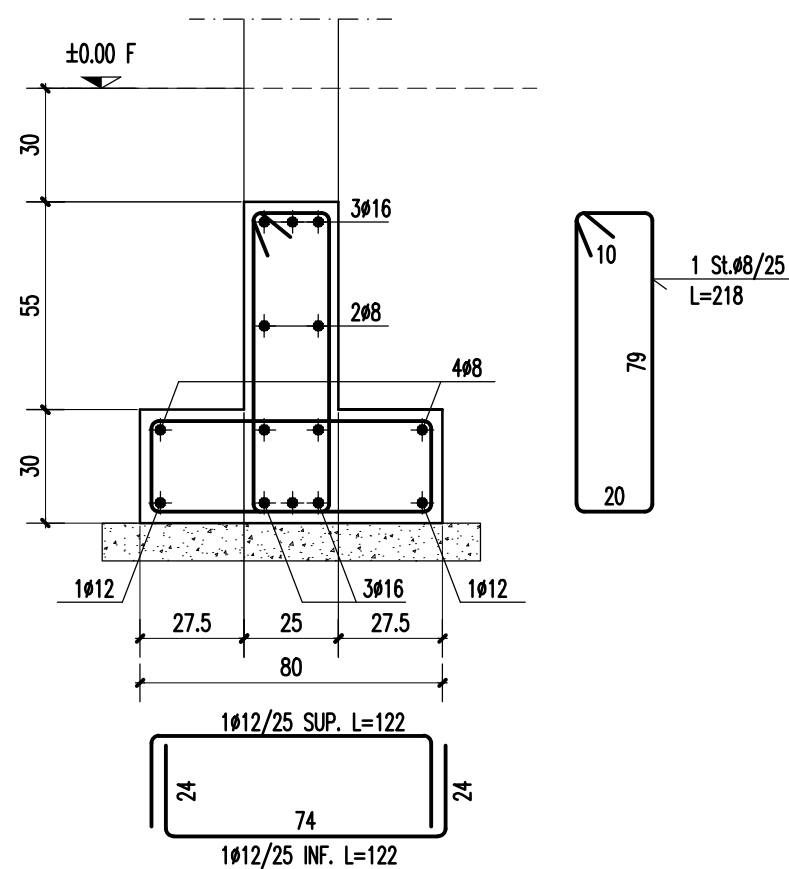
FONDAZIONE F8
(SCALA 1:20)



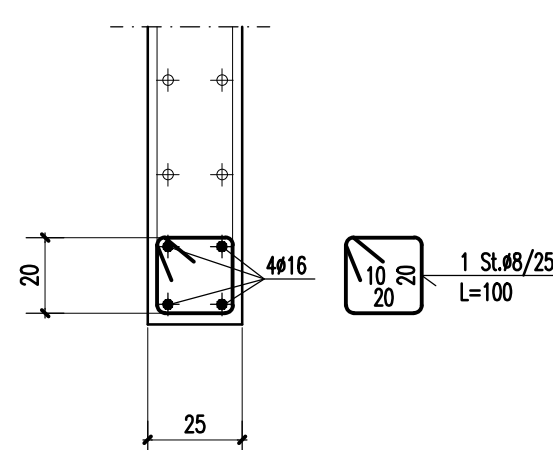
FONDAZIONE F9
(SCALA 1:20)



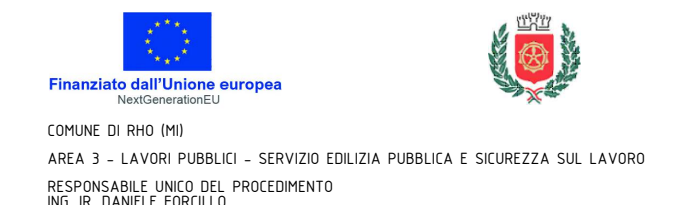
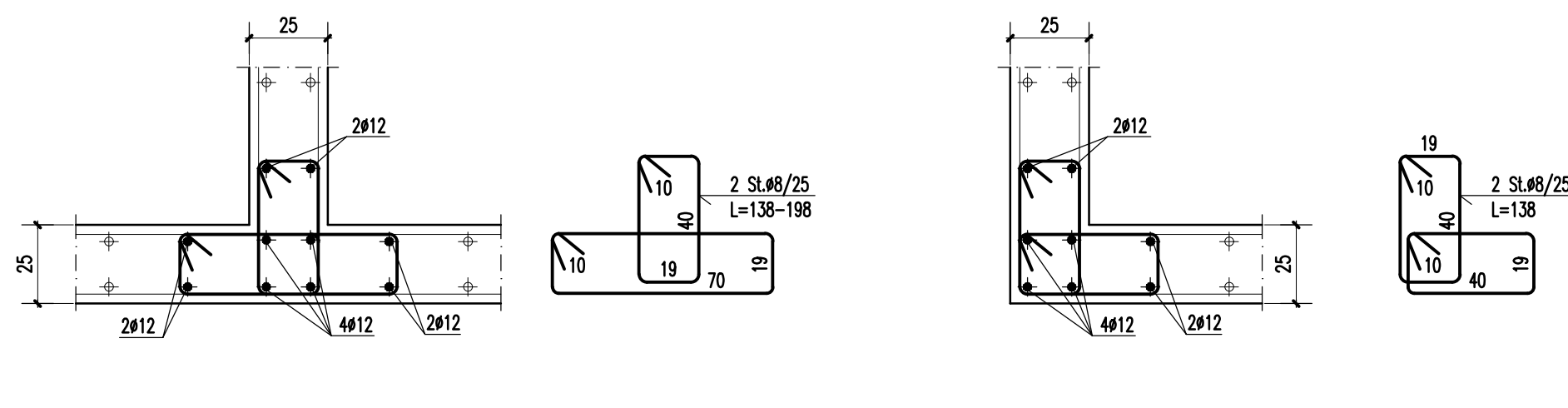
FONDAZIONE F10
(SCALA 1:20)



DETTAGLI TESTA MURI
(SCALA 1:20)

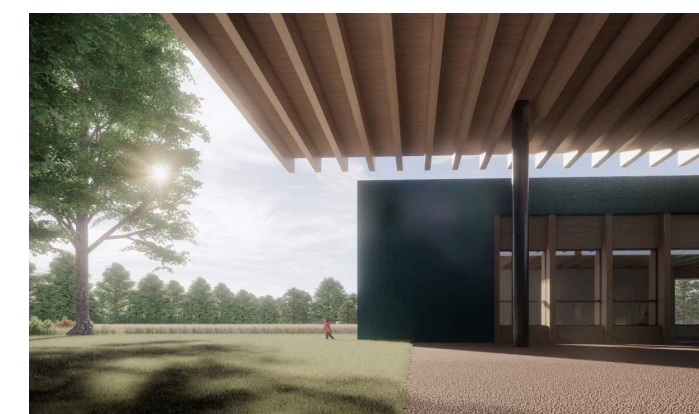


DETTAGLI NODI MURI
(SCALA 1:20)



NUOVO ASILO NIDO IN VIA S. MARTINO

CUP C41B21002670005 - PROGETTO ESECUTIVO



E513

LUG. 2022

REV 00

DETTAGLI COSTRUTTIVI
ARMATURE FONDAZIONI
SCALA 1:20

COORDINAMENTO GENERALE E PROGETTO ARCHITETTONICO
SBG ARCHITETTI
Viale Gorki, 30 - 20146 Milano

PROGETTO DELLE STRUTTURE
STUDIO ANIGIELLA
Viale Trieste, 9 - 20146 Milano

PROGETTO DEGLI IMPIANTI
ADVANCED ENGINEERING SRL
Via Monte Bianco, 36 - 20143 Milano